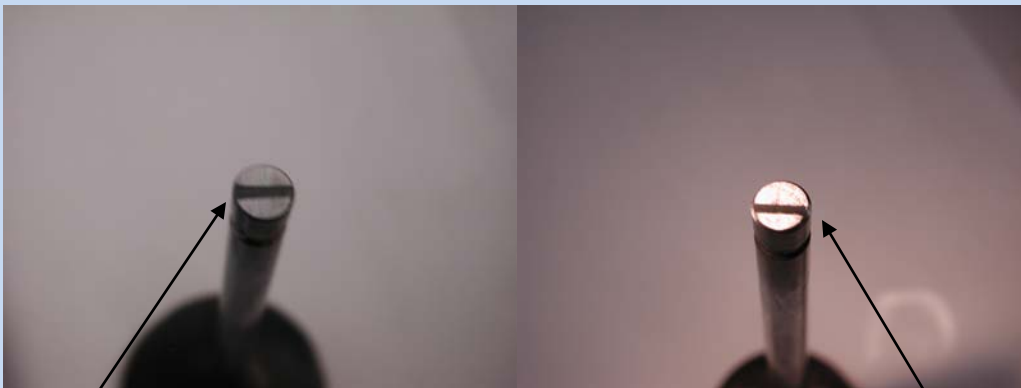


Tracktamer Engines
3278 245th Street
Dewitt, IA 52742
1-563-659-5780
tracktamerengine@aol.com
www.tracktamerengine.com



Correct Rocker Pattern
Centered on Valve Tip

Rocker Pattern Off-Centered
Means Push Rod Too Long or
Too Short

Rocker tip must contact valve tip as close to the center of the valve as possible. This will maximize the lobe lift of the cam and reduce wear on valve guide. If the contact mark is too close to intake side of valve tip, lengthen the push rod. If the contact mark is too close to the exhaust side of the valve, then shorten the push rod. Push rods are available in increments of .050", or can be custom ordered. Use a felt tip marker on end of valve during assembly and rotate engine over to see contact pattern.